



PIONEER: a BD4BO (Big data for better outcome) prostate cancer project

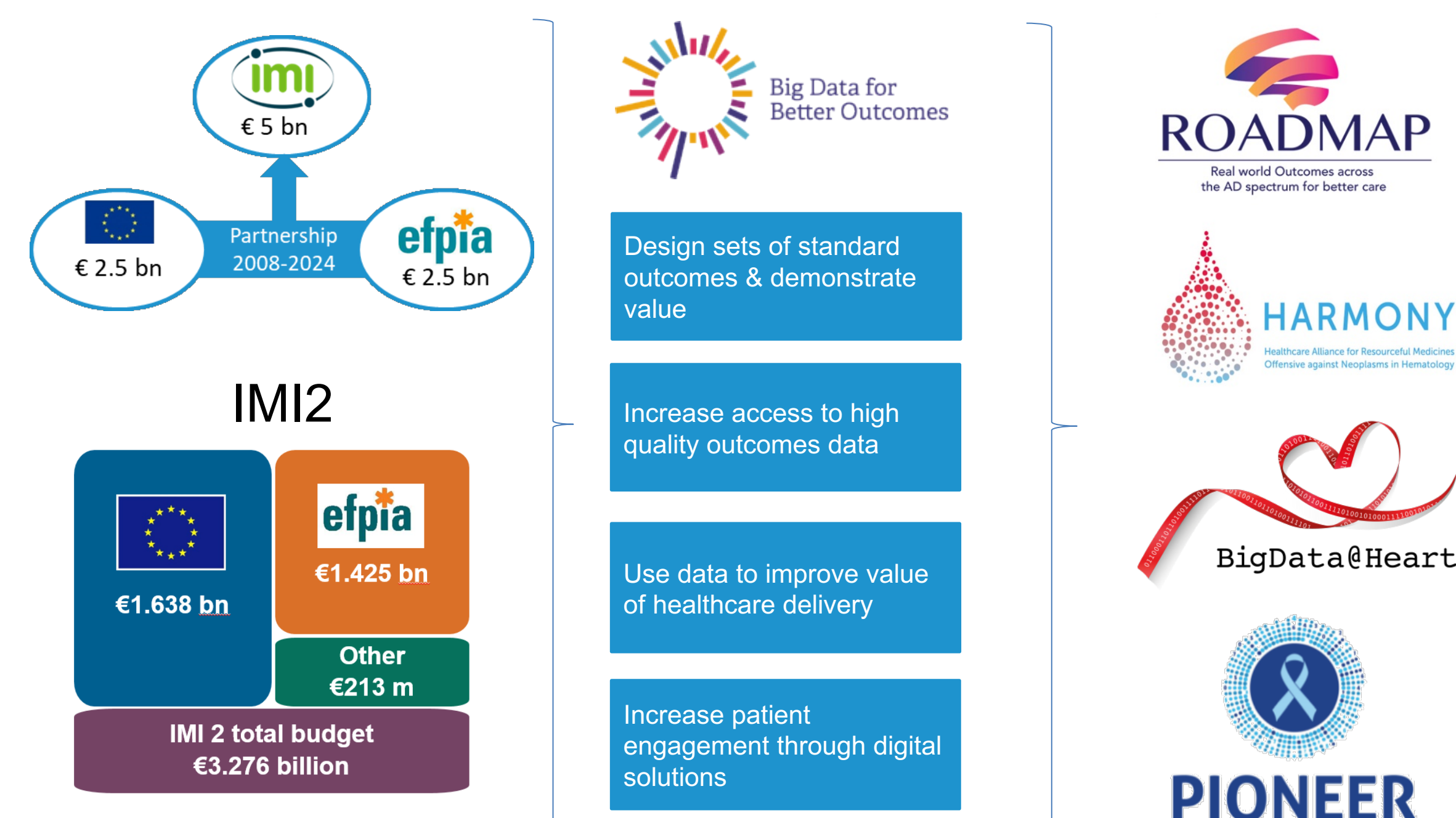
Susan Evans-Axelsson^a, Thomas Abbott^b, Louise Fullwood^c, Muhammad Imran Omar^d, Marinel Cavelaars^e, Maxim Moinat^e, Kees van Bochove^e, Carl Steinbeisser^f, Alex Asilmwe^f, John-Edward Butler-Ransohoff^g, Monique Roobol^h, Maria J. Ribal^h, Charles Auffrayⁱ, Zsuzsanna Devecséri^j, Amit Kiran^j, Emma Smith^h, Mieke Van Hemelrijck^k, Steven MacLennan^l, Denis Horgan^l, Fredrik Moen^m, Christian Reichⁿ, Kishore Papineniⁿ, Sonia Araujoⁿ, Billy Franksⁿ, Bertrand De Meulder^o, Femke van Diggelen^o, Doron Lancet, James N'Dow^p, **Anders Bjartell**^q and PIONEER Consortium*

a. Lund University, b. Astellas, c. Pinsent Masons, d. University of Aberdeen, e.The Hyve, f. Bayer AG, g. Erasmus, h. European Association of Urology, i. EISBM, j. Sanofi, k. King's College London, l. European Alliance for Personalised Medicine (EAPM), m. IHE, n. IQVIA, o. ttopstart, p. Weizmann Institute, Rehovot, Israel

About PIONEER

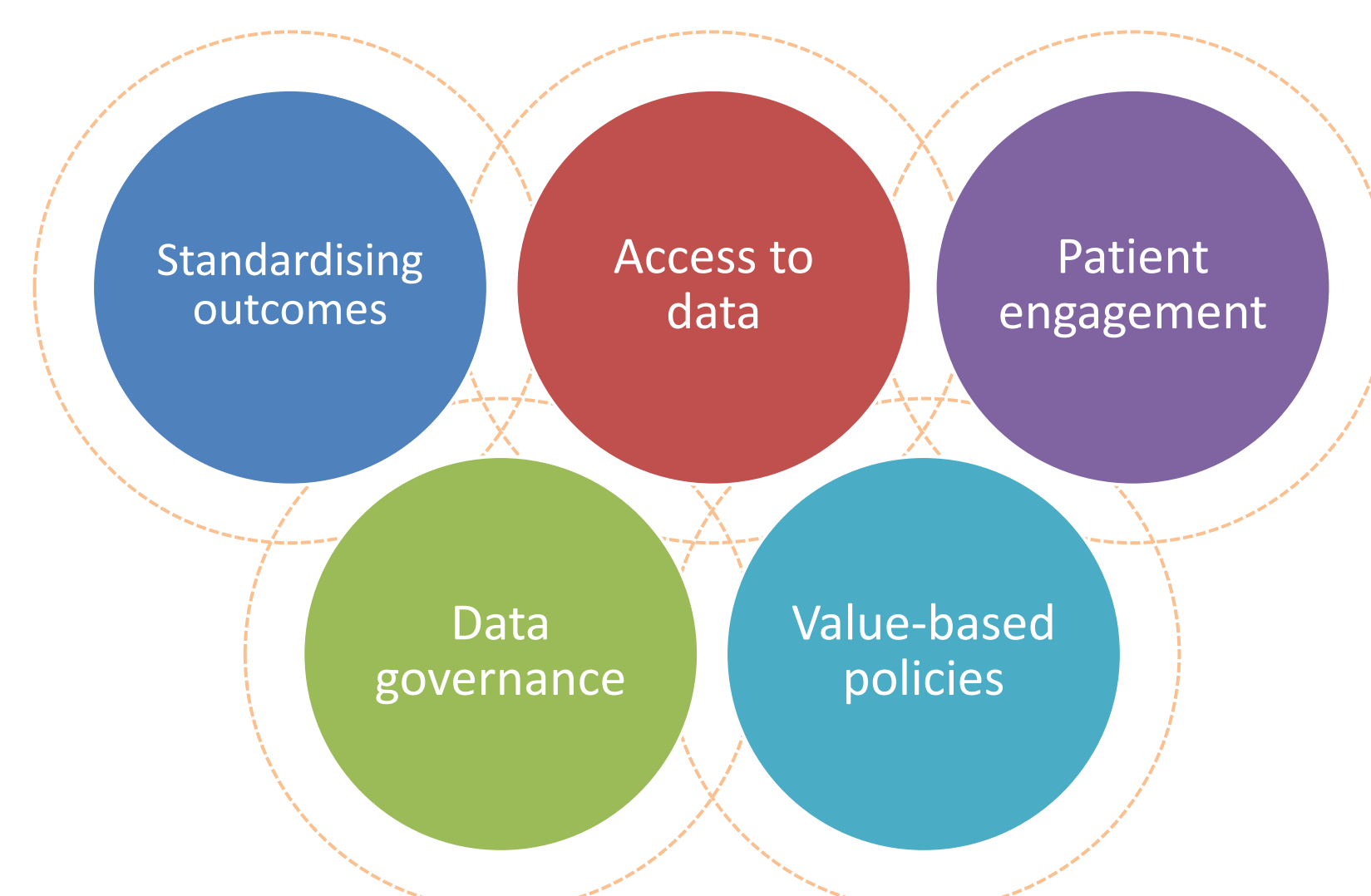
- An IMI2 funded pan-European public private partnership consisting of 32 stakeholders from across 9 countries.
- Launched in May 2018 PIONEER brings together all relevant stakeholders in the field of prostate cancer research as well as clinical and social care.
- Five year (2018-2023) 12 M€ program.

BD4BO: Europe's largest public-private partnership in healthcare research



PIONEER's goal

To ensure the optimal care for all European men diagnosed with prostate cancer by unlocking the potential of big data and big data analytics.




PIONEER's Objectives


- Identify critical evidence gaps in prostate cancer care through a prioritisation exercise including all stakeholders.
- Define core outcome sets for localised, locally advanced, and metastatic prostate cancer in the context of the patient's treatment pathway.
- Collect, standardise and integrate existing 'big data' from prostate cancer patients across different stages of the disease into a single innovative data platform.
- Use a unique set of methodologies and advanced analytical methods to answer the research questions identified.
- Empower clinicians, policy makers and payers to improve decision-making and optimise care for patients with prostate cancer.

PIONEER's expected deliverables

- A single innovative data platform in which existing 'big data' from prostate cancer patients across different stages of the disease has been standardise and integrate.
- A community of all European prostate cancer stakeholders including urologists, oncologists, HTAs, policy makers, pharm, patients, data scientists, regulators, economists
- Meaningful and standardised clinical endpoints and outcome measures for localised, locally advanced, and metastatic prostate cancer.
- Tools for analysing complex data sets including genomic data.
- A framework for legal, ethical and governance issues which will allow for cross-boarder usage of big data sources whilst acknowledging data security constraints.

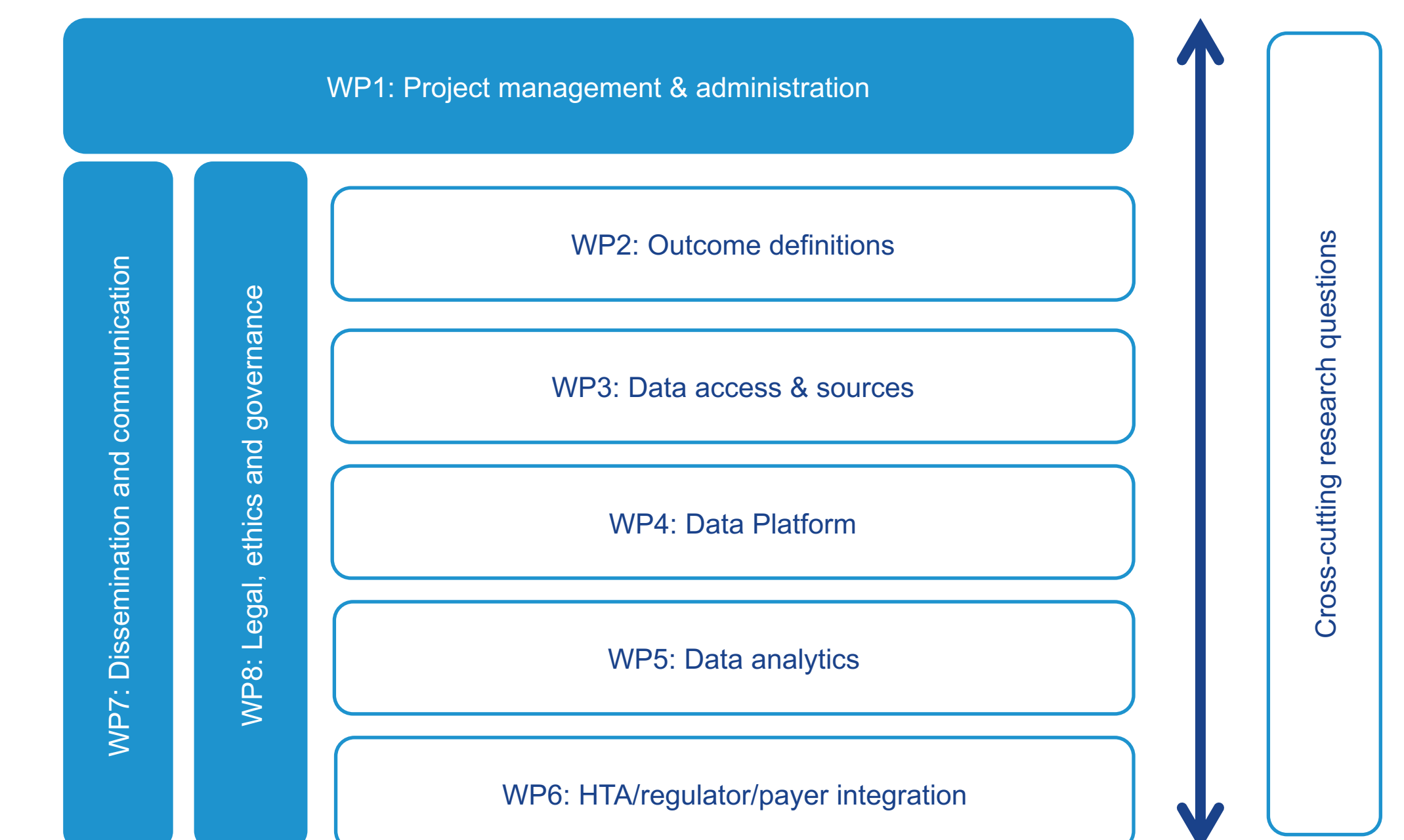
How can you contribute

 Contribute data through an Associated Member Agreement




 Communicate and disseminate the projects objective and results through the PIONEER communication tools and channels

Methods and Materials

PIONEER is made up of 8 teams arranged into individual work packages (WPs)



Results

-  PIONEER has over 60 potential data sources identified
-  As of September 2019 datasets from academic and industrial partners are in the process of being mapped to formats for subsequent analyses
-  Negotiations are underway for access to additional cohorts from European and non-European countries

Conclusion

The PIONEER platform is being built using European and non-European datasets.

PIONEER will harness the power of big data to develop a data platform of unparalleled scale, quality and diversity.

This Big Data statistical power will transform the field of prostate cancer care by empowering meaningful improvements in clinical practice, prostate cancer disease-related outcomes and health economic outcomes.

PIONEER coordinator: James N'Dow, EAU
✉ j.ndow@abdn.ac.uk

PIONEER Deputy coordinator: Anders Bjartell
✉ Anders.Bjartell@med.lu.se

WP3 coordinator: Susan Evans-Axelsson, PhD
✉ Susan.Evans-Axelsson@med.lu.se



www.prostate-pioneer.eu

 @ProstatePioneer

